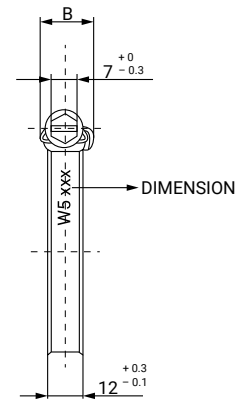
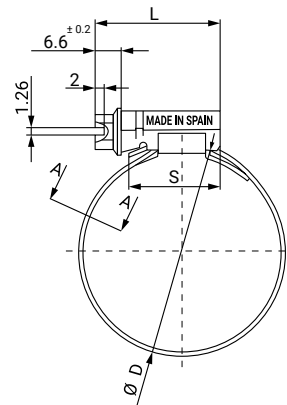


ASYMETRIC STAMPING



This clamp represents the latest stage in the evolution of the ASFA 12 mm range. One of the main developments in this version is the lateral displacement of the band thread, which reduces the tendency of the band end to exit the housing off-centre when tightened.

Thanks to the combination of the housing, the locking system and the location of the screw within the housing, this clamp offers superior performance at the same torque ratings.

Specially recommended for industrial applications.

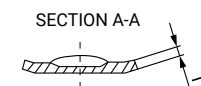
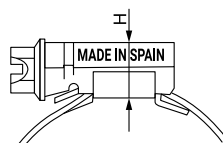
DIN 3017. The ASFA S hose clip complies fully with the DIN 3017 norm and also with the directive EU 2002/95/EC.

* The maximum application pressure can vary depending on the type of hose used and the geometry of the coupling.

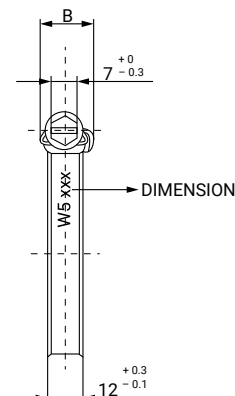
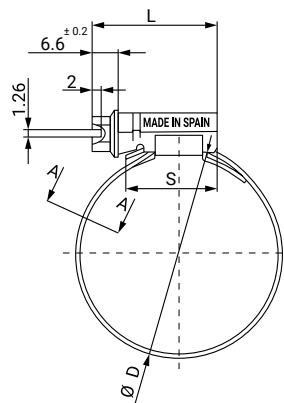
MATERIAL: Band and support: W5
Stainless steel
X5Cr Ni Mo 17.12.2
DIN 1.4401/1.4404 AISI 316
Bolt: Stainless steel

CORROSION RESISTANCE: AISI 316 Cu DIN 1.4578
1000 hours salt spray
(ASTM B-117)

Ø Application mm	Part Number	L +1-0.5	T ±0.1	H Max.	B Max.	S Min.	Max. Pressure Bar	Box Quantity	Outer Box Quantity
16-27	03017720	29,6	0,80	11	16,7	19,5	45	50	400
20-32	03017500	29,6	0,80	11	16,7	19,5	45	50	400
25-40	03017519	29,6	0,80	11	16,7	19,5	40	50	400
30-45	03017738	29,6	0,80	11	16,7	19,5	35	50	400
32-50	03017527	29,6	0,80	11	16,7	19,5	35	50	200
40-60	03017535	29,6	0,80	11	16,7	19,5	30	50	400
50-70	03017543	29,6	0,80	11	16,7	19,5	25	50	400
60-80	03017551	29,6	0,80	11	16,7	19,5	20	50	50
70-90	03017560	29,6	0,80	11	16,7	19,5	17	50	50
80-100	03017578	29,6	0,80	11	16,7	19,5	14	25	200
90-110	03017586	29,6	0,80	11	16,7	19,5	12	25	200



ASYMETRIC STAMPING



Ø Application mm	Part Number	L +1-0.5	T ±0.1	H Max.	B Max.	S Min.	Max. Pressure Bar	Box Quantity	Outer Box Quantity
100-120	03017594	29,6	0,80	11	16,7	19,5	10	25	200
110-130	03017607	29,6	0,80	11	16,7	19,5	8	25	25
120-140	03017615	29,6	0,80	11	16,7	19,5	7	25	25
130-150	03017623	29,6	0,80	11	16,7	19,5	7	25	25
140-160	03017631	31,6	0,80	11	16,7	21,5	7	25	25
150-170	03017640	31,6	0,80	11	16,7	21,5	7	25	25
160-180	03017658	31,6	0,80	11	16,7	21,5	7	25	25
170-190	03017666	31,6	0,80	11	16,7	21,5	2	10	10
180-200	03017674	31,6	0,80	11	16,7	21,5	2	10	10
190-210	03017682	31,6	0,80	11	16,7	21,5	1,8	10	10
200-220	03017690	31,6	0,80	11	16,7	21,5	1,8	10	10
210-230	03017703	31,6	0,80	11	16,7	21,5	1,8	10	10
220-240	03017711	31,6	0,80	11	16,7	21,5	1,8	10	10
230-250	03017746	31,6	0,80	11	16,7	21,5	1,6	10	10
240-260	03017765	31,6	0,80	11	16,7	21,5	1,6	10	10
250-270	03017754	31,6	0,80	11	16,7	21,5	1,6	10	10
260-280	03017776	31,6	0,80	11	16,7	21,5	1,6	10	10
270-290	03017787	31,6	0,80	11	16,7	21,5	1,6	10	10
280-300	03017798	31,6	0,80	11	16,7	21,5	1,6	10	10
290-310	03017799	31,6	0,80	11	16,7	21,5	1,6	10	10